

# TRACKING GENDER EQUALITY IN THE LOWER MEKONG REGION

Accessing gender statistics is critical to examine and track changes in gender inequality. However, in the Lower Mekong Region, gender statistics such as Gender Inequality Index (GII) and Sustainable Development Goals (SDGs) indicators are only available at national level, and there is a lack of sub-national sex disaggregated data. This makes it difficult to examine multiple aspects of gender inequality, and to track the performance of promoting gender equality within countries.

The **Gender Equality Monitoring (GEM)** platform has been developed to offer officially published data and periodically updated sex disaggregated data repository for public use, and helps visualize gender inequality at sub-national level, including gender inequality index (GII), and gender gaps in various sectors such as education, health, employment, household decision-making etc. - a starting point to further explore the causes and more complex dynamics of gender inequality.



This platform can be used by gender advocates, policymakers, researchers and development practitioners to:



Understand sub-national level dynamics that contribute to gender inequality



Establish baseline data for tracking gender inequality



Identify gender data gaps in sectors and at finer scale i.e. district, commune and village levels



Increase inter-ministerial cooperation on data collection, data sharing, gender analysis and gender-responsive planning

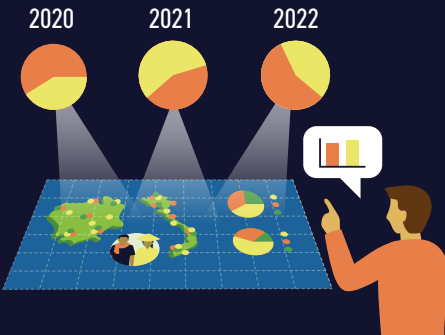
## THE GEM IS AN ON-LINE INTERACTIVE PLATFORM WITH TWO MAIN FUNCTIONS:



**Visualizing and mapping gender data**



**Offering a gender data repository**



The platform will be periodically updated and can be customized to the user's needs. Users can contribute to this initiative in suggesting any available set of data that they wish to incorporate into the platform.



Depending on the availability of data over time, the platform could also be used to visualize historical changes in the gender (data) gap.

SERVIR-Mekong is a joint initiative of the U.S. Agency for International Development (USAID) and the U.S. National Aeronautics and Space Administration (NASA), implemented by the Geospatial Information Department of Asian Disaster Preparedness Center (ADPC). It makes use of publicly available satellite imagery and technologies to address challenges related to water resources, disasters, climate resilience, agriculture and ecosystems in the Lower Mekong.

To learn more about the **Gender Equality Monitoring (GEM) Platform** and access available tools visit online:

<https://servir.adpc.net/tools/gender-equality-monitoring-gem-platform>



SCAN ME