



USAID
FROM THE AMERICAN PEOPLE



adpc

SERVIR **MEKONG**

SUPPORTING EARLY FLOOD PREPAREDNESS IN MYANMAR

2015 MYANMAR FLOOD



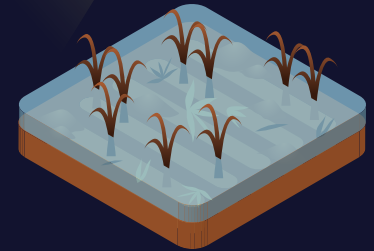
15,239 HOUSES
damaged

(Source: UNOCHA, August 2015)



OVER 1 MILLION
affected by flood

(Source: UNOCHA, August 2015)



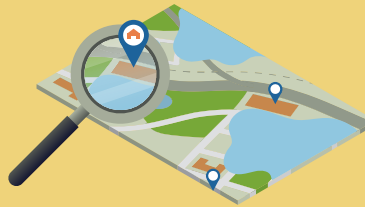
OVER 527,000 HECTARES
of crops damaged

(Source: FAO, December 2015)

SERVIR-MEKONG SERVICE: SUPPORTING EARLY FLOOD PREPAREDNESS IN MYANMAR



Guide the stockpiling of
flood relief materials

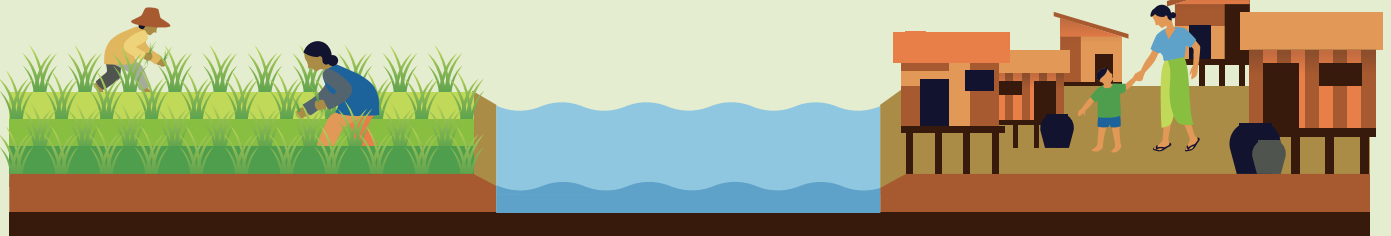


Support the Government of Myanmar
in conducting risk assessments



Develop long-term flood
preparedness and mitigation plans

POTENTIAL BENEFICIARIES IN FLOOD-PRONE AREAS



1.7 million people

204 townships

Figures derived from SERVIR-Mekong's Historical Flood Analysis Tool.

SERVIR-Mekong is a joint initiative by U.S. Agency for International Development (USAID) and U.S. National Aeronautics and Space Administration (NASA), implemented by the Geospatial Information Department of Asian Disaster Preparedness Center (ADPC) by using publicly available satellite imagery and technologies to address challenges related to water resources, disasters, climate resilience, agriculture, and ecosystem in the Lower Mekong.

To learn more about SERVIR-Mekong and access available tools visit <https://servir.adpc.net/>