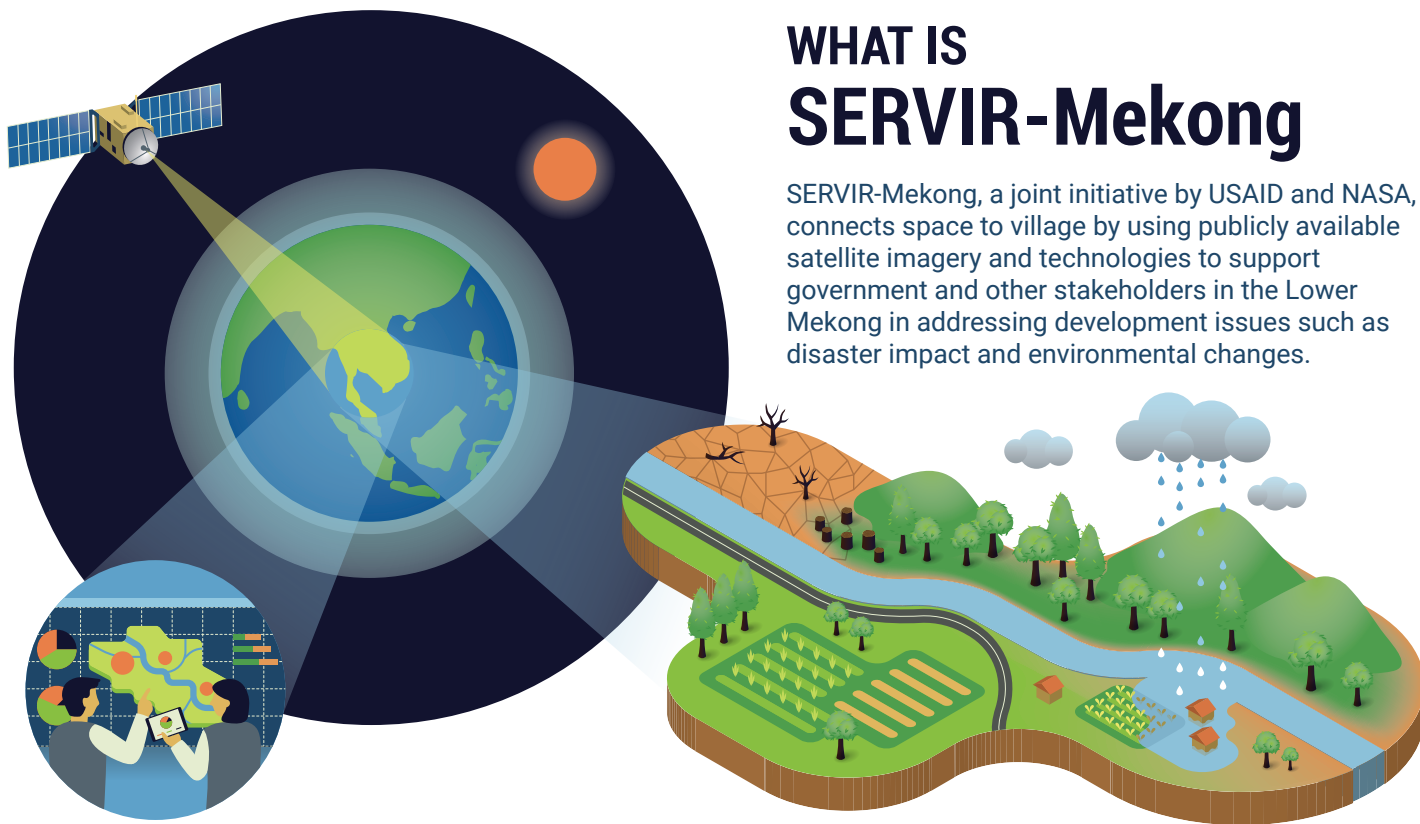


WHAT IS SERVIR-Mekong

SERVIR-Mekong, a joint initiative by USAID and NASA, connects space to village by using publicly available satellite imagery and technologies to support government and other stakeholders in the Lower Mekong in addressing development issues such as disaster impact and environmental changes.



CONNECTING SPACE TO VILLAGE

OBSERVING THE EARTH



Observing the Earth and its dynamics from space can tell us many things about the state of our climate and environment, how it is changing over time and its impacts on people. In similar ways that countries create weather maps and forecasts informed by satellite data, space-based information can be used to understand and plan for events such as drought, floods and forest loss.

WORKING ON NEEDS



Understanding the development priorities of governments and institutional partners in the countries of the Lower Mekong around climate and environmental dynamics, Earth observation information can be used by agencies to help them deliver their missions and public services better.

SHARING INFORMATION



SERVIR-Mekong promotes open access to data and ensures that information, tools and services are freely available to inform decision making at the local and regional levels. We work with decision makers and scientists to develop innovative new tools to help build the resilience of people vulnerable to food insecurity, natural hazards, unsustainable land use and other risks.

IMPACTING PEOPLE



Our **Drought and Crop Yield Monitoring System** is helping water resource managers to plan for dry spells and lessen the impact of drought on people's rice yield and food availability.

Our **Land Cover Monitoring System** helps forest managers ensure their reforestation and community forestry initiatives are being managed successfully.