



USAID
FROM THE AMERICAN PEOPLE



SUPPORTING EARLY FLOOD PREPAREDNESS IN MYANMAR

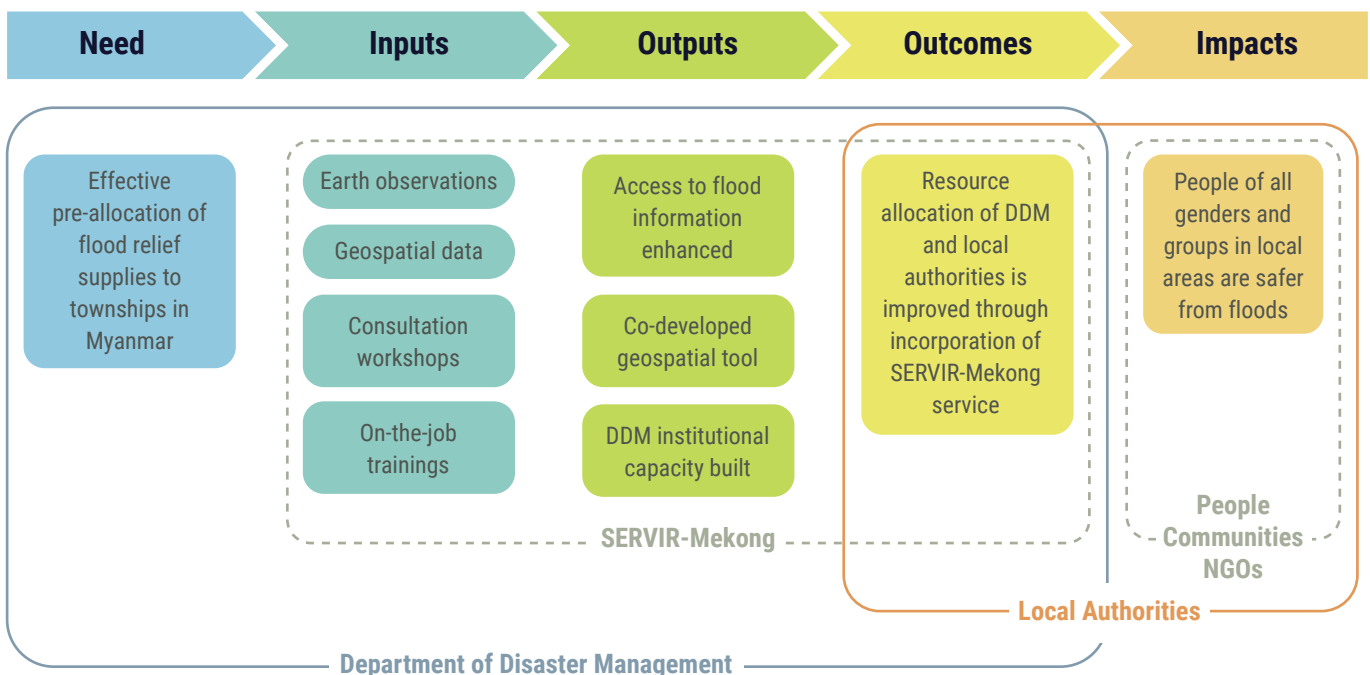
SERVIR-Mekong, a partnership between the U.S. Agency for International Development and the U.S. National Aeronautics and Space Agency (NASA), is collaborating with the Government of Myanmar's Department of Disaster Management (DDM), under the Ministry of Social Welfare Relief & Resettlement to improve annual flood preparedness. With access to updated historic flood information, the DDM can accurately plan supply allocation, conduct risk assessments and develop flood preparedness and mitigation plans.



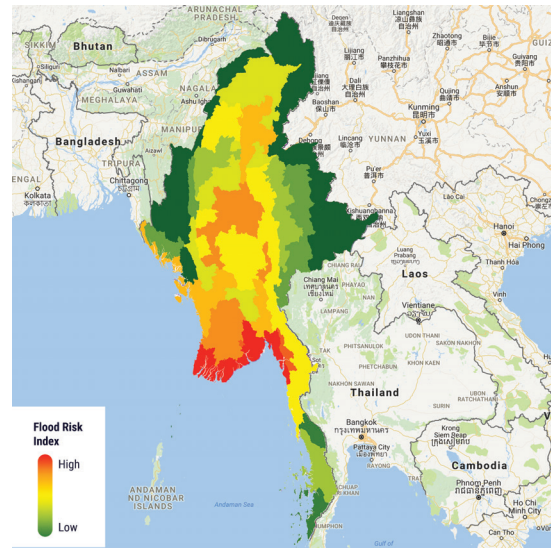
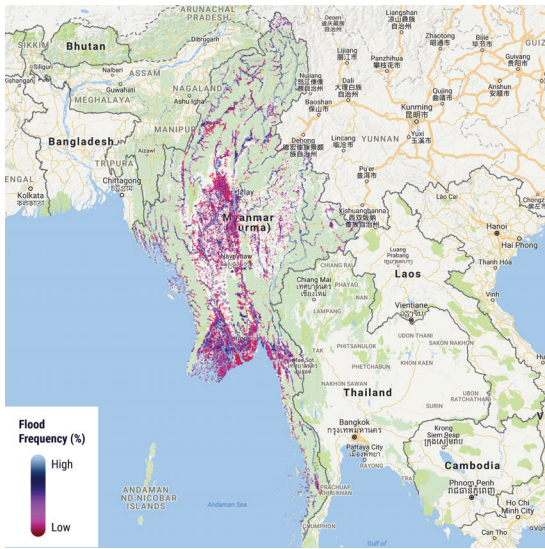
Flooding in Chin State, Myanmar 2015
(Photo Credit: Department of Disaster Management, Myanmar)

Current flood preparedness decisions in Myanmar are based on incomplete information of frequency, duration and extent of floods. SERVIR-Mekong is working with DDM to augment flood information with a richer historical record of water extents, expanding the current one-to-two year record to over 30 years.

Through an user-driven "service planning approach," SERVIR-Mekong articulates needs and capacity gaps with DDM, and collaborates with scientists and practitioners to identify appropriate inputs and outputs to achieve the desired outcome and impact.



This information service integrates satellite-derived flood frequency (left map) with population, socio-economic, and vulnerability data, into a flood risk index (right map). This approach gives DDM additional context and insight into flood risk at the township level.



Prepared by SERVIR-Mekong and DDM with information from the Joint Research Centre and NASA/USGS Landsat

Township-level flood risk map of Myanmar, integrating the frequency of floods, population distribution, and vulnerability data.

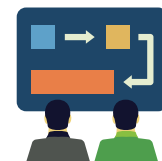
FLOOD RISK MAPPING TOOL APPLICATIONS



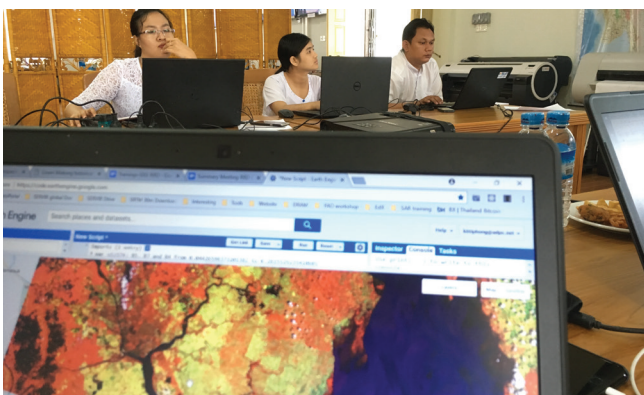
Guiding the stockpiling of flood relief materials such as drinking water, life vests, boats



Support the Government of Myanmar in conducting risk assessments



Developing long-term flood preparedness and mitigation plans



SERVIR-Mekong works closely with OneMap Myanmar and the Myanmar Information Management Unit (MIMU) to support Myanmar's progress in ensuring open access to spatial data.

SERVIR-Mekong leverages its partnership with Google to reach government ministries with environmental monitoring technology. DDM staff explore how to apply Google Earth Engine to understand historic flood trends. Photo: Kittiphong Phongsapan/ADPC

SERVIR-Mekong is a joint initiative by U.S. Agency for International Development (USAID) and U.S. National Aeronautics and Space Administration (NASA), implemented by the Geospatial Information Department of Asian Disaster Preparedness Center (ADPC) by using publicly available satellite imagery and technologies to address challenges related to water resources, disasters, climate resilience, agriculture, and ecosystem in the Lower Mekong.

To learn more about SERVIR-Mekong and access available tools visit <https://servir.adpc.net/>